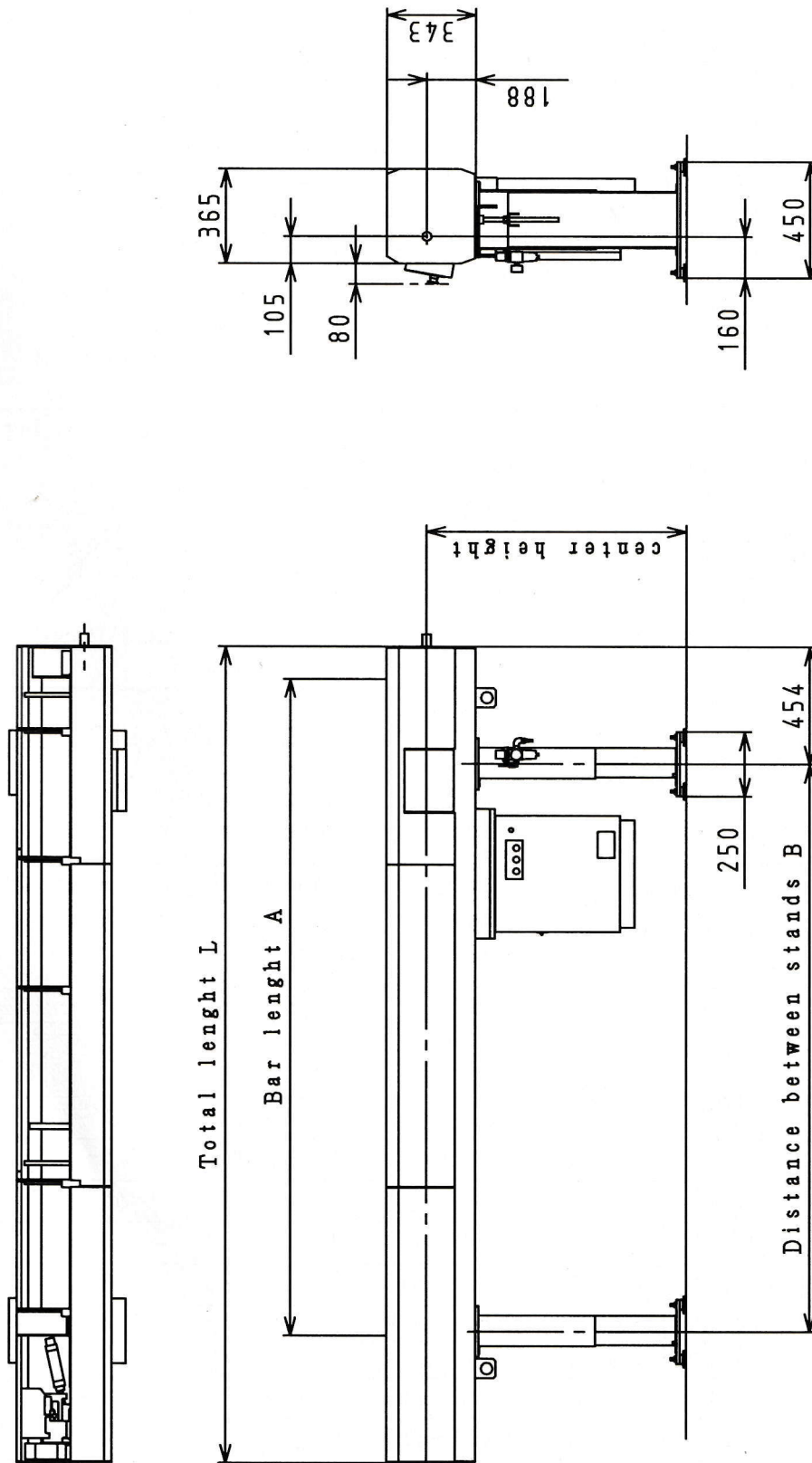


3. Main specifications

3-1. Specifications for feeder

SPECIFICATION	DESCRIPTION	REMARK		
Bar length	Machine Specification +45 mm 2.5m spec..... 1,000~2,545 3.0m spec..... 1,000~3,045 4.0m spec..... 1,000~4,045			
Bar diameter	Varies according to feed pipe diameter:			
		Feed pipe diameter	Bar Diameter	
	Standard	φ 16	φ 4~ φ 16	φ13 or over, end shall be stepped.
	Large diameter	φ 20	φ 4~ φ 20	φ17 or over, end shall be stepped.
	Small diameter	φ 12	φ 2~ φ 12	φ 9 or over, end shall be stepped.
Maximum speed	Round Type 16 5000min ⁻¹ Type 20 4000min ⁻¹			
Capacity of material shell	φ 4 → 48 pieces φ 16 → 12 pieces	Rack Width 195 mm		
Bar bend, etc.	B class of MAS standard or better. surface shall be equivalent to finished bar.	For high speed rotation application, higher quality is required.		
Top-cut system	·Front sizing by counter. ·Block delete signal.	According to the type of lathe, system varies.		
Remainder removal	Remainder bar length 55~400 mm Removal	To rear drawing off discharge		
Feed-out speed	Advance 800 mm/s Retreat 1,600 mm/s Introduction 80 mm/s			
Feed-out force	Max. 100N (10 kg f)			
Power supply	AC200/220V, 50/60Hz, 3P, 1.5KVA			
Control system required voltage	General purpose sequencer Sequencer power supply AC200V Solenoid Valve DC24V Motor AC200V			
Air	0.5~0.7MPa 100L/min (ANR)	Clean air is needed.		
Mass	350 kg for 2.5m spec. 380 kg for 3.0m spec. 420 kg for 4.0m spec.			

3-2. Over view



Spec.	Measure	L	A	B
2.5m		3164	2545	2200
3.0m		3664	3045	2700
4.0m		4664	4054	1850+1850