

2. Specifications	TK5M-90PL
2.1 Machine Specifications	
2.1.1 Workpiece specifications	
2.1.1.1 Shapes and sizes	Round bars φ 10~90
2.1.1.2 Material	Aluminum alloy (For materials that are high in silicone content, tensile strength or hardness, consult us separately.)
2.1.1.3 Workpiece length	2 ~ 6 m
2.1.2 Cutting specifications	
2.1.2.1 Cut-off length	5 ~ 200 mm
2.1.2.2 Crop cut length	min.10mm
2.1.2.3 Remainder material length	55 ~ (55 + cut-off length) mm
2.1.3 Machine specifications	
2.1.3.1 Sawing machine	
Saw blade	Tip saw max. φ 330mm
Saw head speed	1520 ~4120 rpm [inverter transmission]
Saw drive motor	11 kW - 2P
Saw head feed	By hydraulic cylinder
Inside vertical vise	Hydraulic cylinder type, Max. 3.8 kN
Inside horizontal vise	Hydraulic cylinder type, Max. 3.8 kN (IN and OUT sides integrated)
Gauging stopper	Gauging range: 5 ~ 200 mm Size indication: Digital method
Hydraulic system	Hydraulic pump 2.2 kW - 4P Setting pressure: 5.5 Mpa Tank capacity: 90 lit.
2.1.3.2 Auto loader	
Loading system	Push-up system driven by hydraulic cylinder
Magazine loading width	670 mm

Workpiece feed system By pusher, oil motor drive

Pusher advance speed 5 ~ 10 m/min.

2.1.3.4 Electric requirement

Environment	Temperature	0 ~ 55 degree
	Humidity	10 ~ 90% RH (no dew condensation)
Input power source		3-phase, 200 Vac, 50/60 Hz / 220 Vac, 60 Hz
Motor circuit		3-phase, 200 Vac, 50/60 Hz / 220 Vac, 60 Hz
Control circuit		Single phase, 100 Vac, 50/60Hz
Solenoid valve circuit		Single phase, 100 Vac, 50/60Hz

2.1.4 Workpiece feed height 900 mm

2.1.5 Machine dimensions 1490 (W) x 6520 (L) x 1523 (H) mm

2.1.6 Machine weight

Sawing machine 1700 kg

Auto loader 600 kg

2.2 Standard Accessories

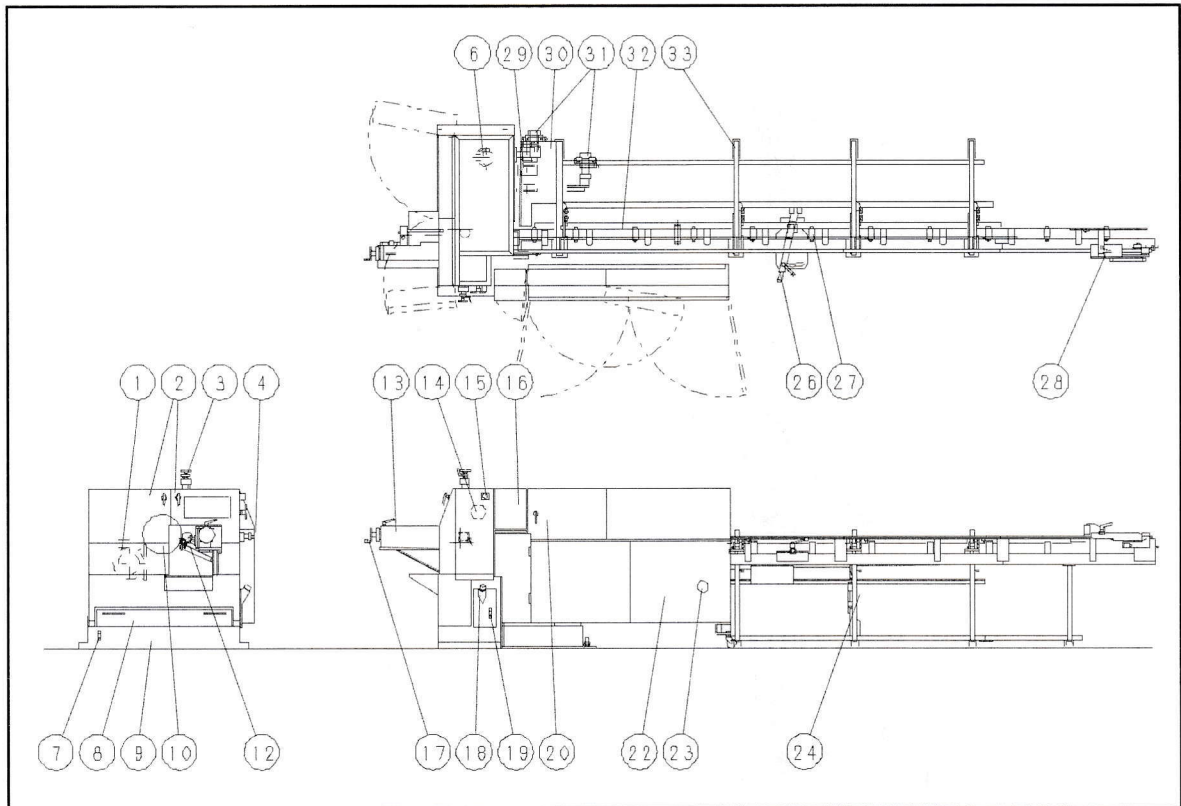
Part Name	Specifications	Q'ty
Tool box	H-353 (with TSUNE Mark)	1
Tools : Allen wrenches	1.5, 2, 2.5, 3, 4, 5, 6, 8, 10, 12, 14	1 each
Tools : Double-ended spanners	10x13, 17x19	2 each
Tools : Single-ended spanners	24	1
Tools : Screwdriver	Regular-Phillips type (2000M)	1
Tools : Oiler	Type B	1
Machine cover	(L)2800x(W)2000x(H)1600	1
Saw flanges	63 x 10 x 2	1
Saw bolt	M16 x 55	1 pce
Center collar	32 x 40	1

OUTSIDE DOCUMENT

17 OCT 2016

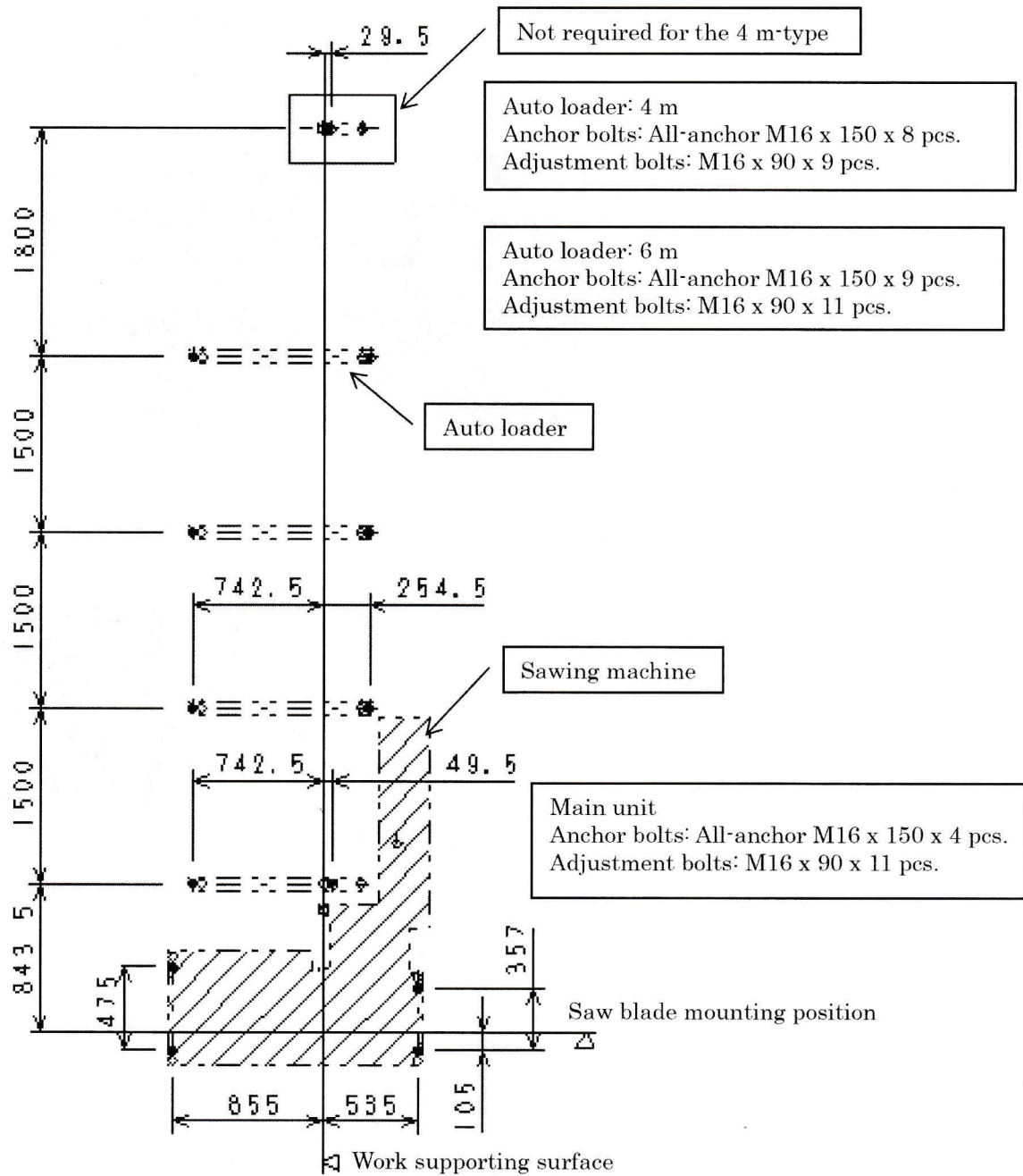
UACJ Extrusion (Thailand) Co., Ltd.

1. Names of Components



- | | | |
|--|--------------------------------------|------------------------------|
| 1. Saw drive motor | 16. Operation panel | 31. Hydraulic solenoid valve |
| 2. Front door | 17. Cut-off length adjustment handle | 32. Auto loader fixed guide |
| 3. Vertical vise positioning handle | 18. Hydraulic oiling port | 33. Magazine |
| 4. Horizontal vise positioning handle | 19. Hydraulic oil level gauge | |
| 5. | 20. Side cover | |
| 6. | 21. | |
| 7. Coolant level gauge | 22. Control panel | |
| 8. Chip box | 23. ELECTRIC POWER SOURCE switch | |
| 9. Machine bed | 24. Loading cylinder | |
| 10. Circular saw | 25. | |
| 11. | 26. Work stopper handle | |
| 12. Unloader | 27. Roller table | |
| 13. Gauging stopper | 28. Pusher | |
| 14. Saw head backward positioning handle | 29. Hydraulic pump | |
| 15. Saw head speed dial | 30. Work end stopper for auto loader | |

3.3 Foundation Drawing
 (Auto loader: 4m,6m)



OUTSIDE DOCUMENT
 17 OCT 2016
 UACJ Extrusion (Thailand) Co.,Ltd.