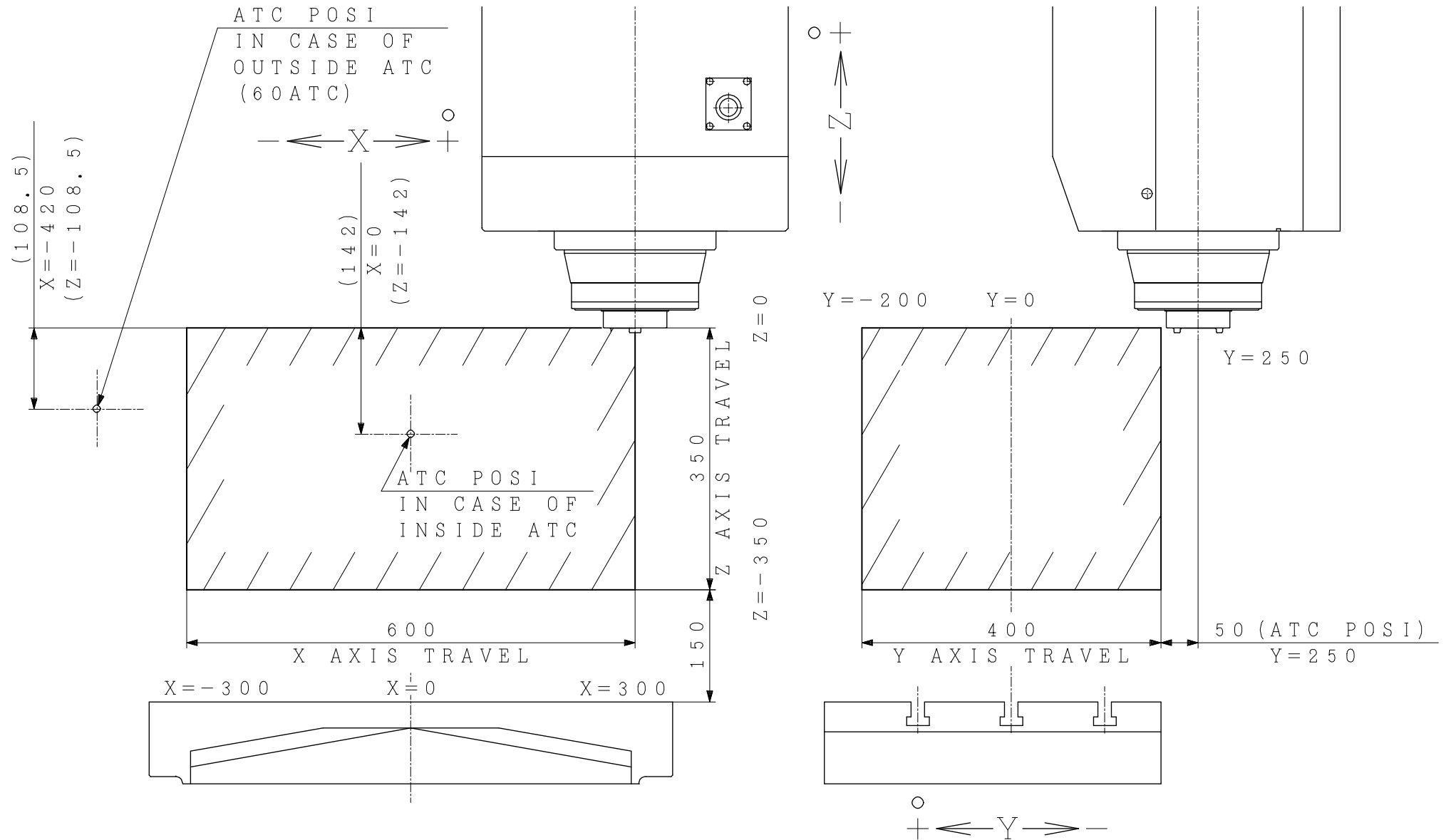
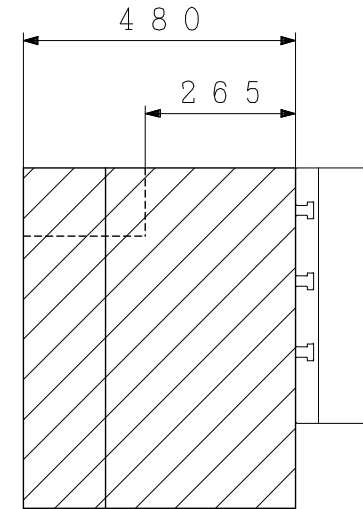
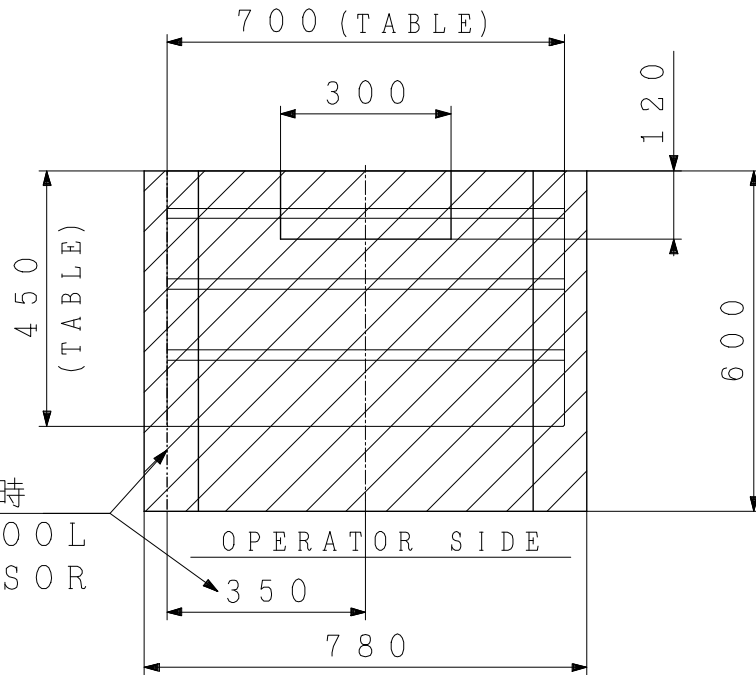


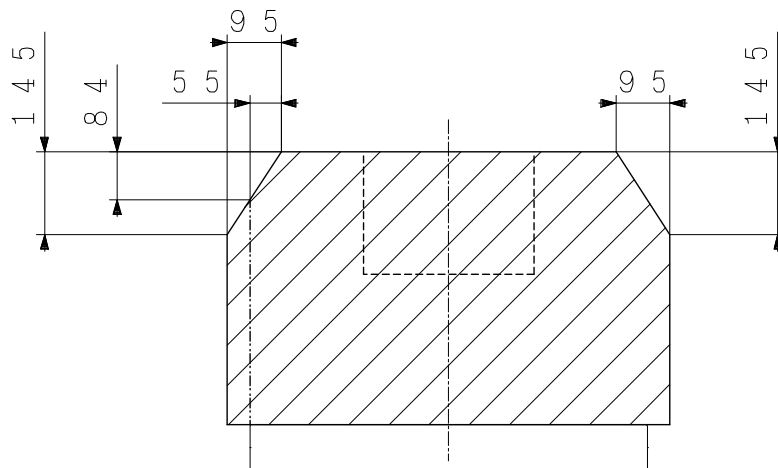
SPINDLE WORK DIMENSION
(YBM-640V, 24000 rpm)



WORK DIMENSION
(YBM-640V)



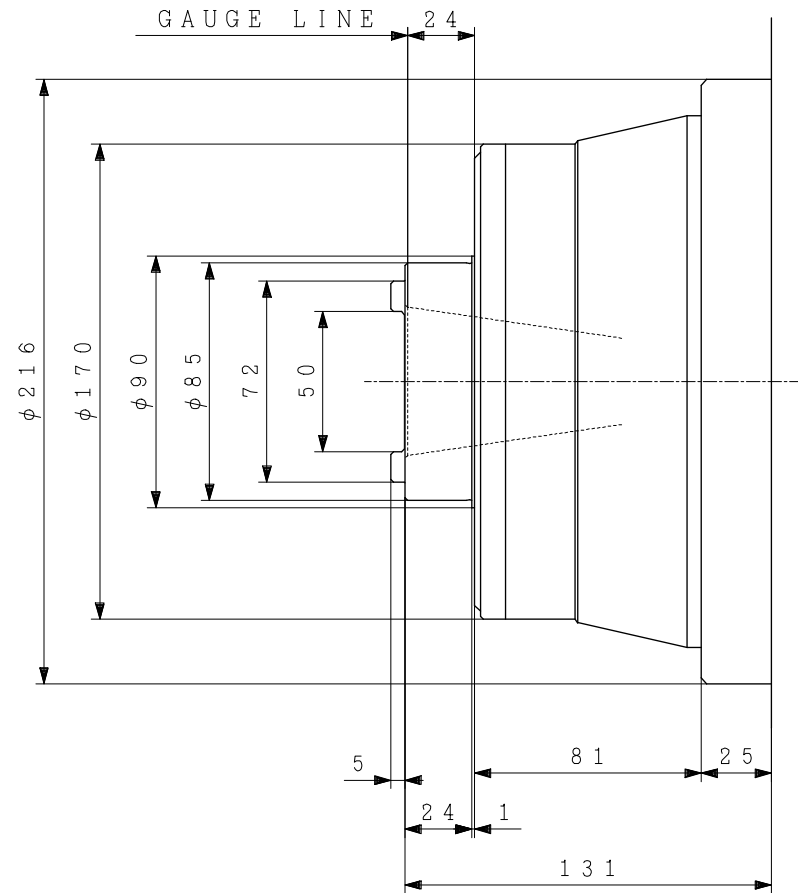
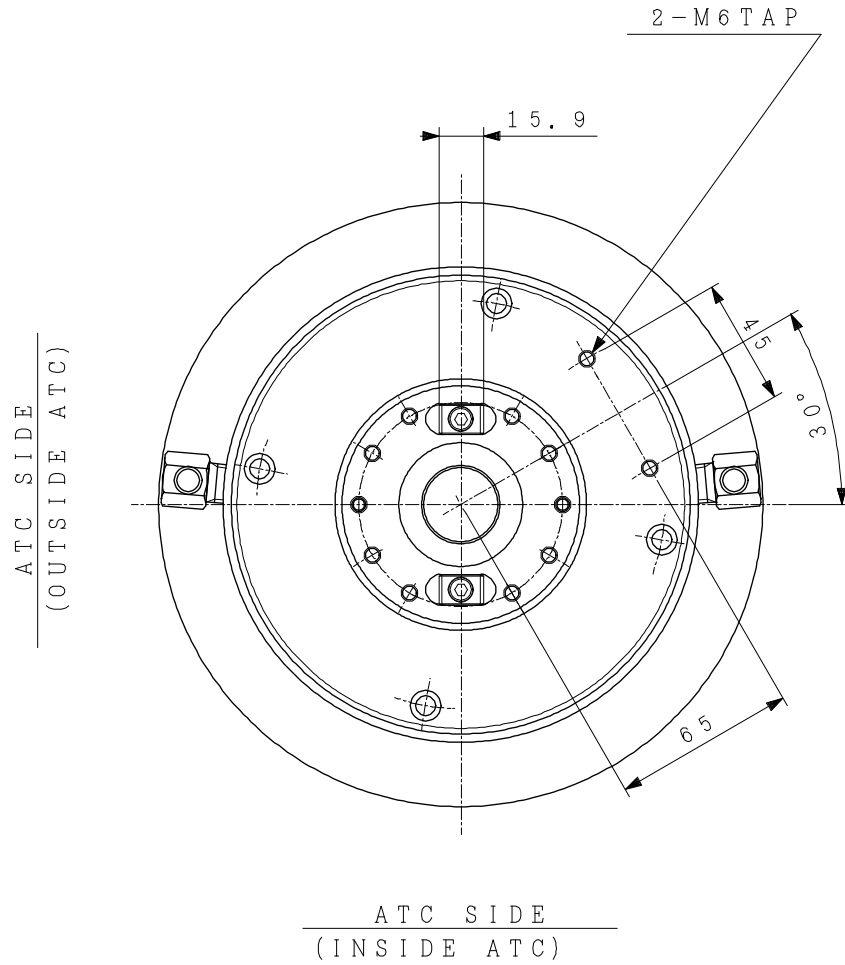
工具長補正装置有りの時
CASE OF TOOL
LENGTH SENSOR



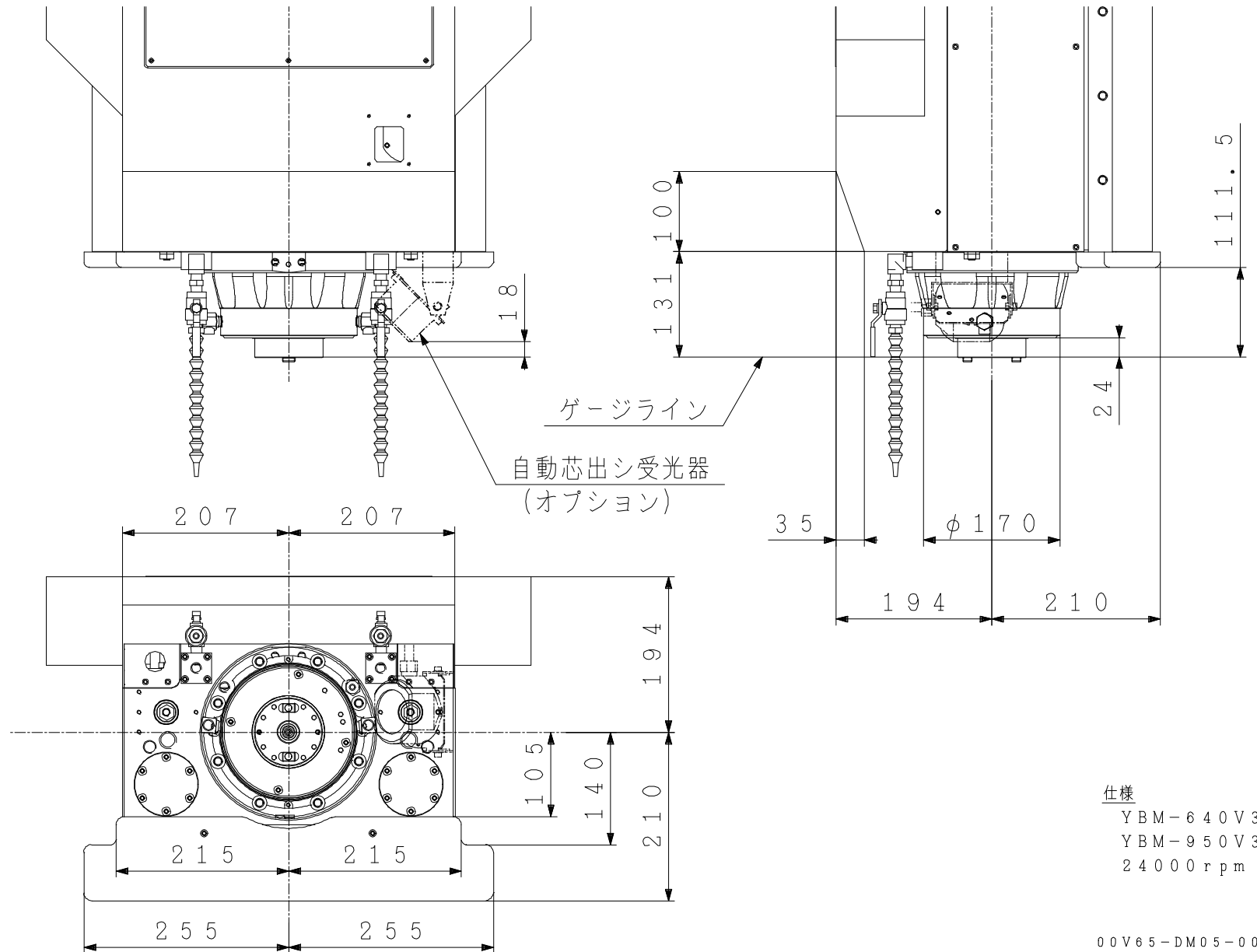
オプション（工具長補正装置、自動芯出し装置等）により、ワーク制限が発生します。必ず、加工前に確認願います。
Work size is restricted by an option unit (Tool length compensation unit, Auto measuring unit and so on).
Certainly check before machining.

MAX : 300kg

SPINDLE DIMENSION (YBM-640V/950V)
BIG PLUS SYSTEM (24000 min⁻¹)



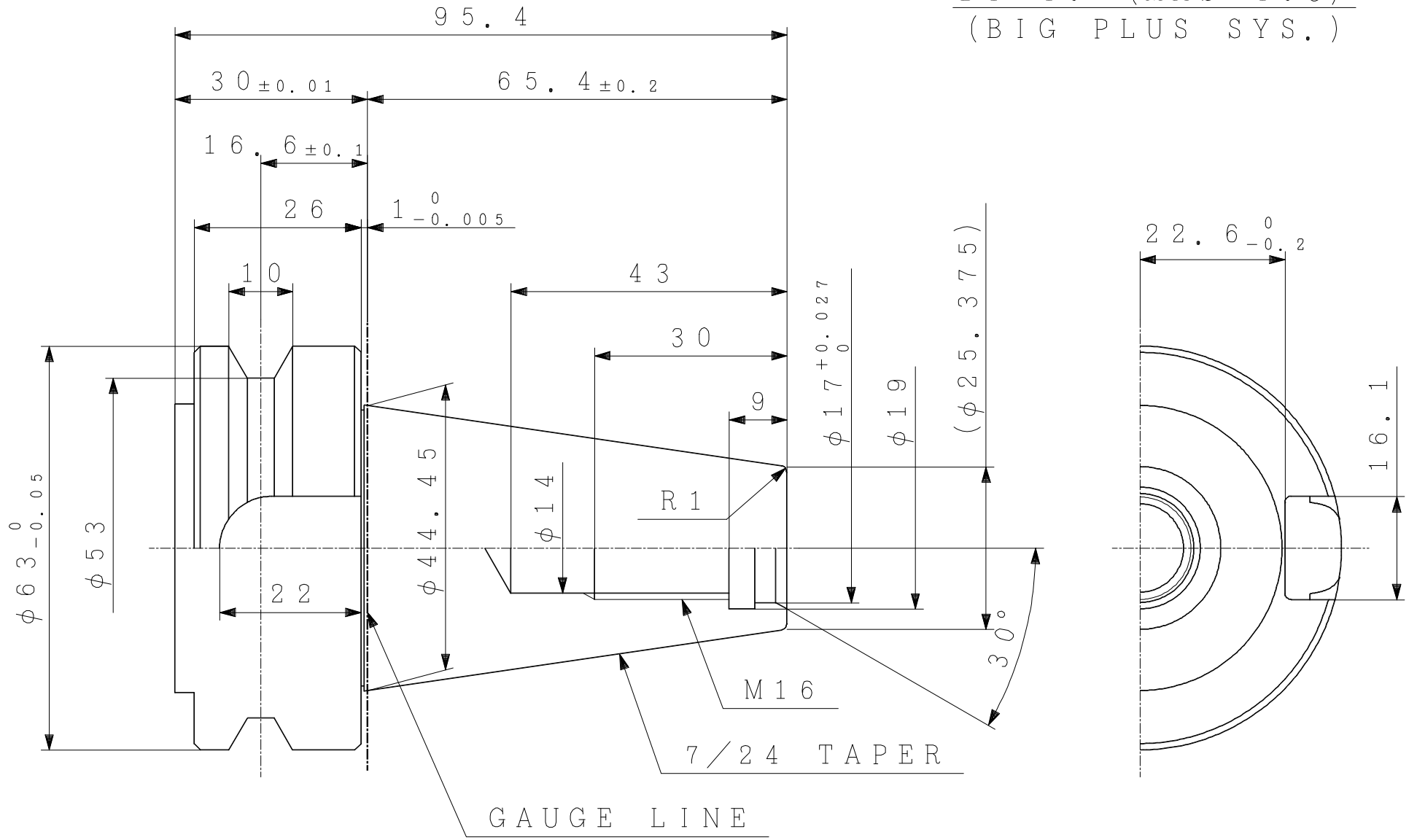
スピンドルヘッドディメンジョン



仕様
 YBM-640V3
 YBM-950V3
 24000rpm

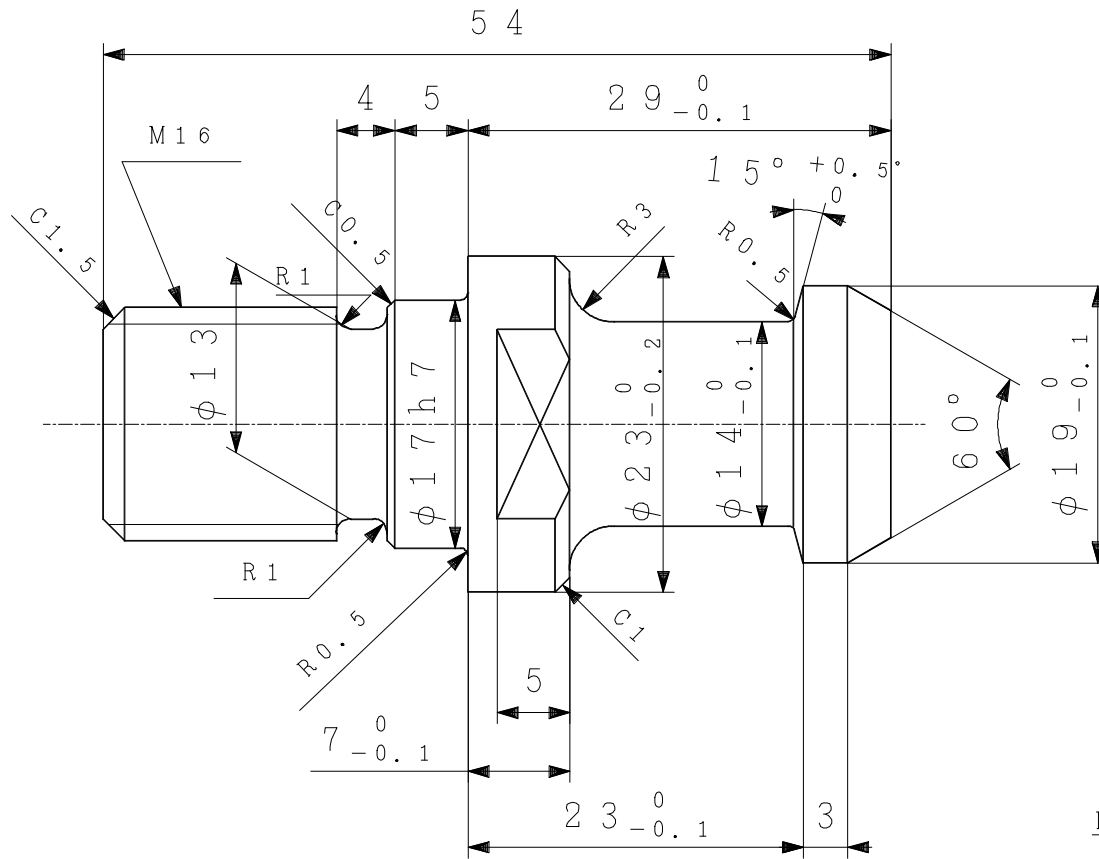
TOOL GAUGES DIMENSION

BT 40 (MAS 403)
(BIG PLUS SYS.)



PULLSTUD DIMENSION

40P (JIS B6339)

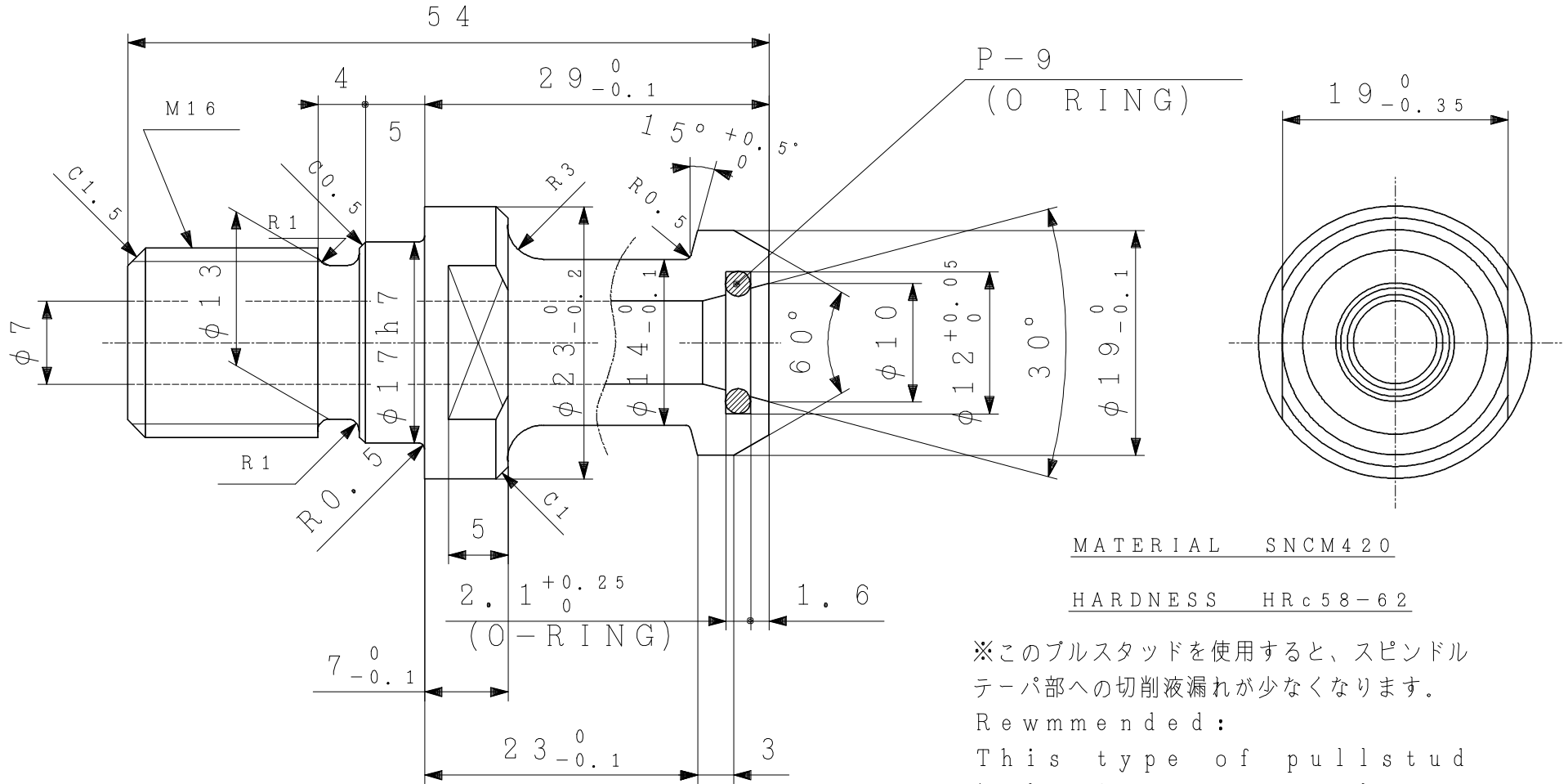


MATERIAL SNCM420

HARDNESS HRc 58-62

PULLSTUD DIMENSION

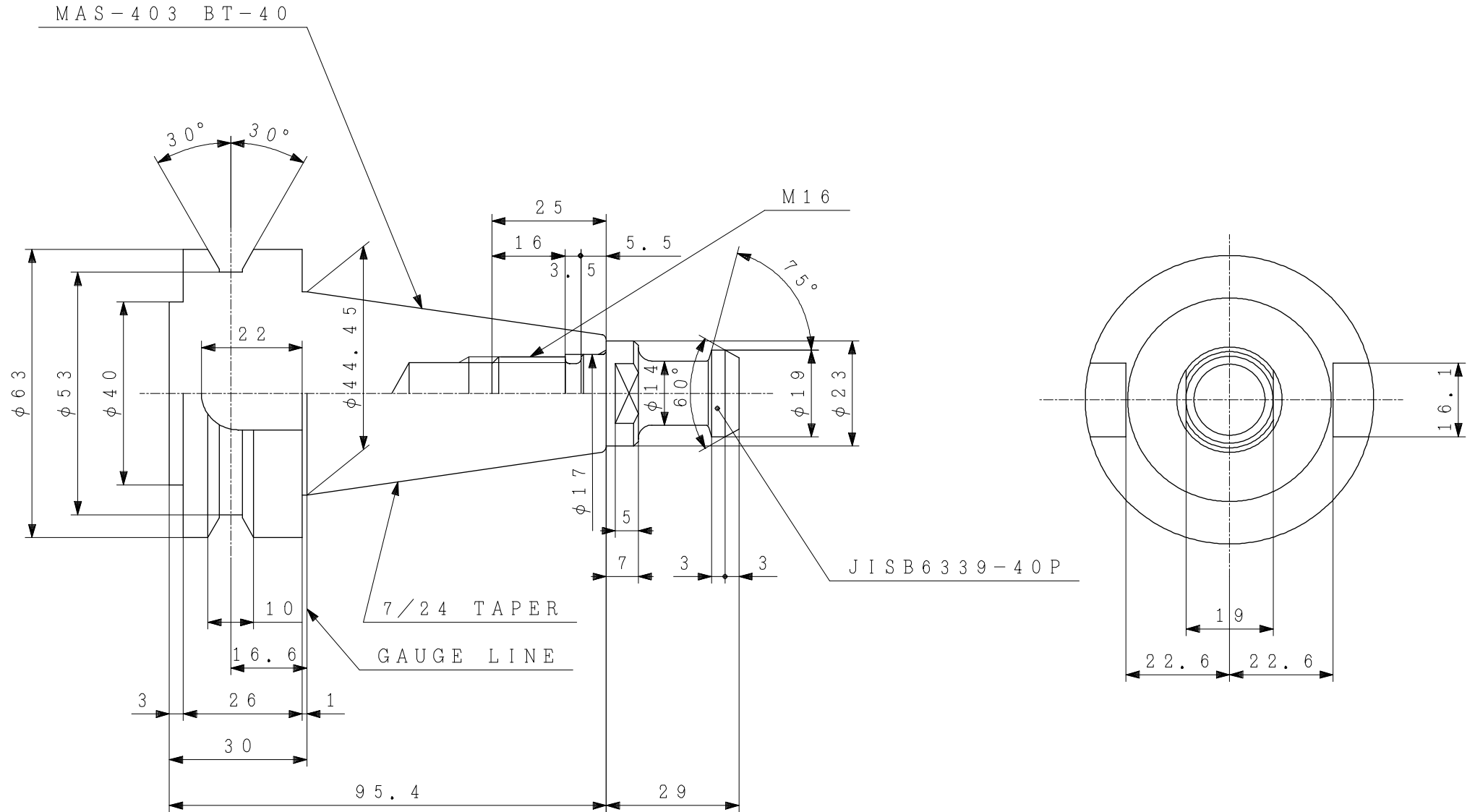
40P (JIS B6339)



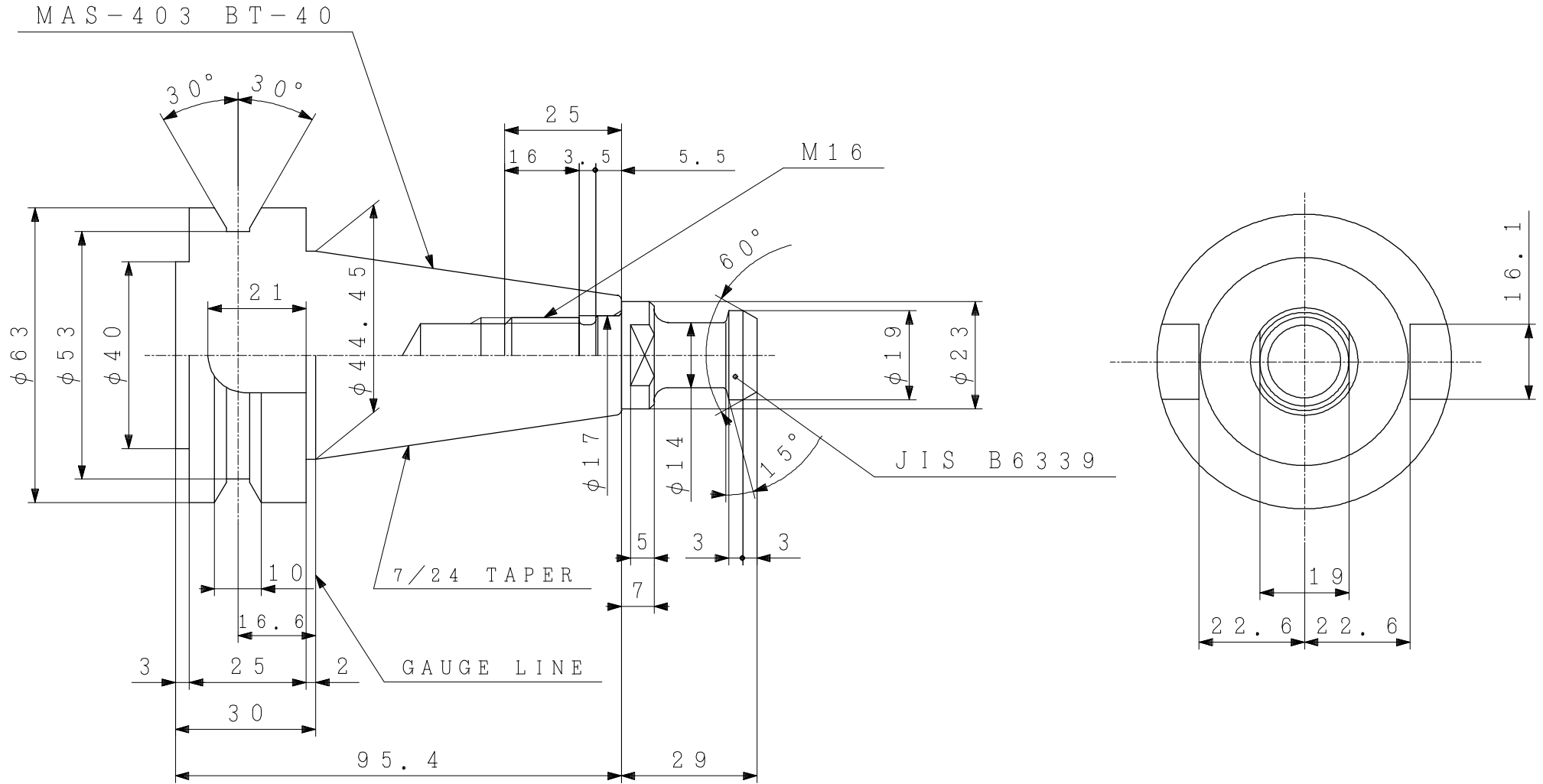
FOR CENTER THROUGH COOLANT OR AIR

VP1539~ (4HC01-421-64A.)

BT 40 TOOL GAUGE DIMENSION
(BIG PLUS SYS.) (JIS B 6339-40P)



BT 40 TOOL GAUGE DIMENSION
(MAS 403 + JIS B 6339)



SPINDLE POWER & TORQUE DIAGRAM

(TYPE : SA40-24000-18.5)

α 112L / 25000iB (A06B-1675-B100#6627)

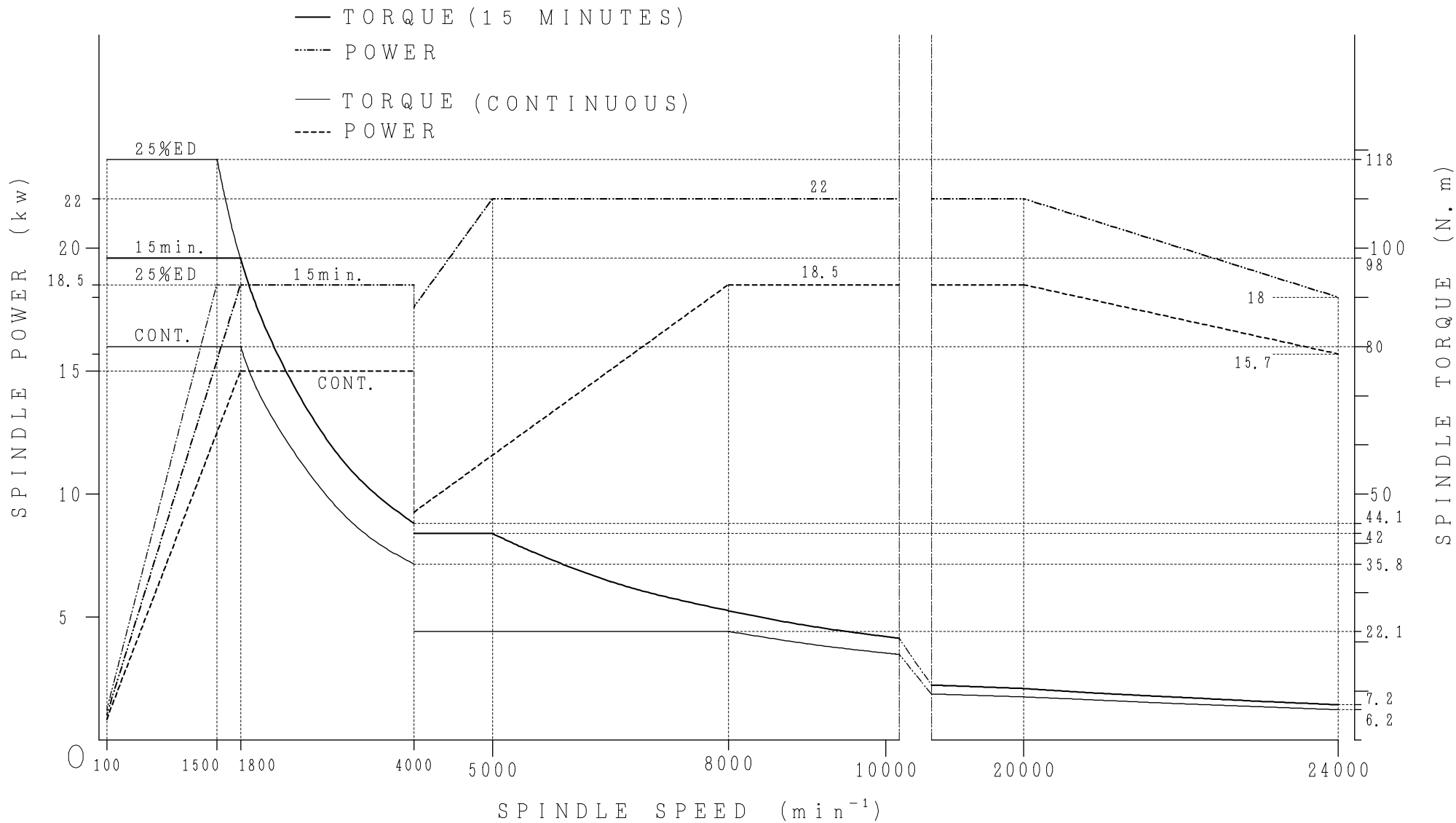
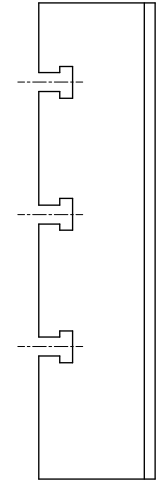
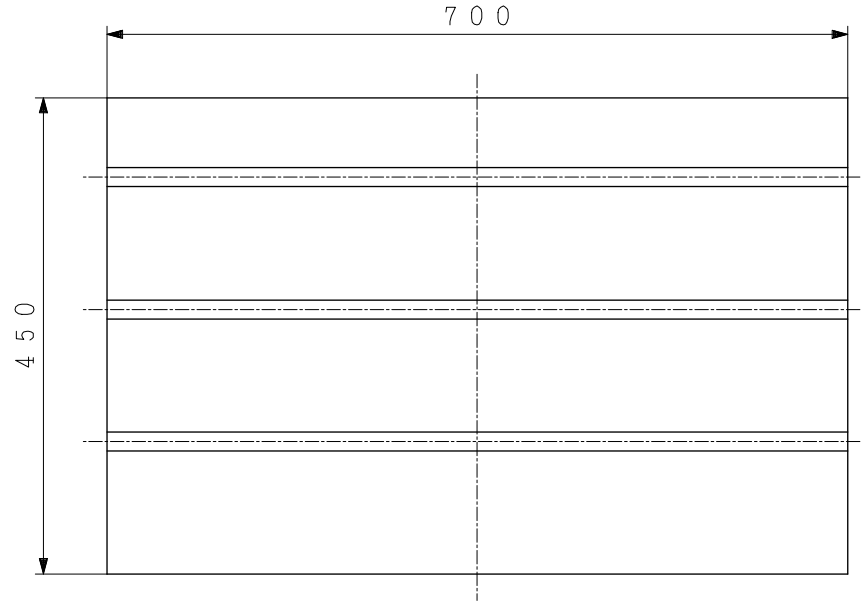
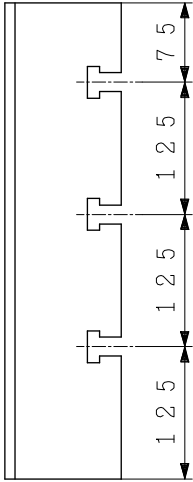
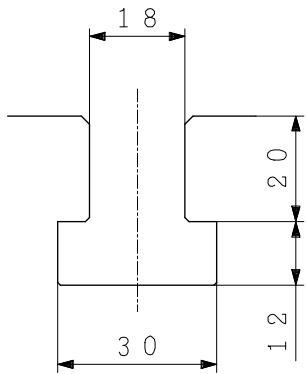


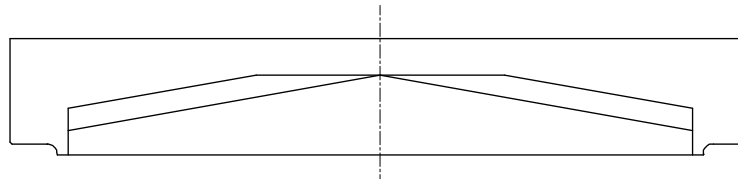
TABLE DIMENSION
(YBM-640V)



OPERATOR SIDE



T SLOT

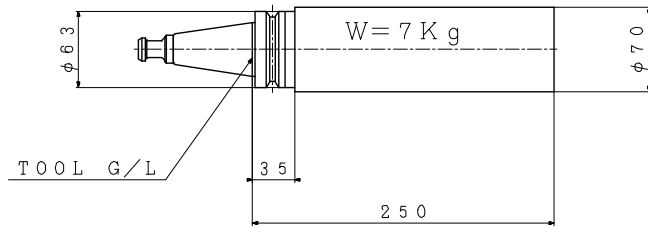


ATC TOOL DIMENSION (MAGAZINE)

ATC工具寸法図 (マガジン)

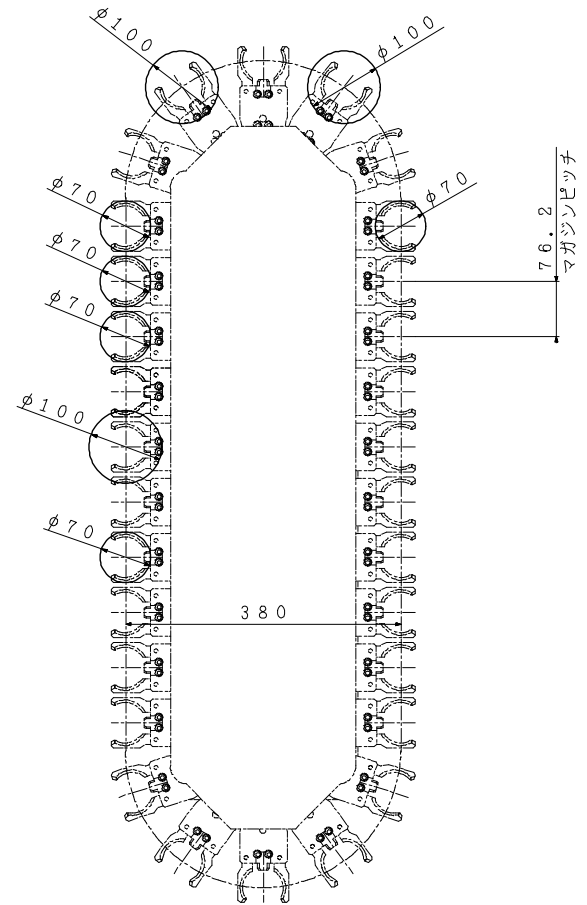
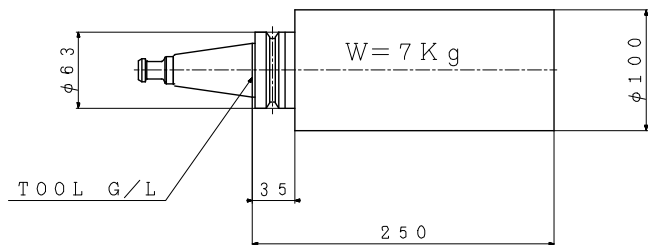
1. 隣接最大工具

マガジンに隣合わせて装着できる最大工具



2. 単一最大工具

マガジンの両隣に工具を入れない状態で装着できる最大工具



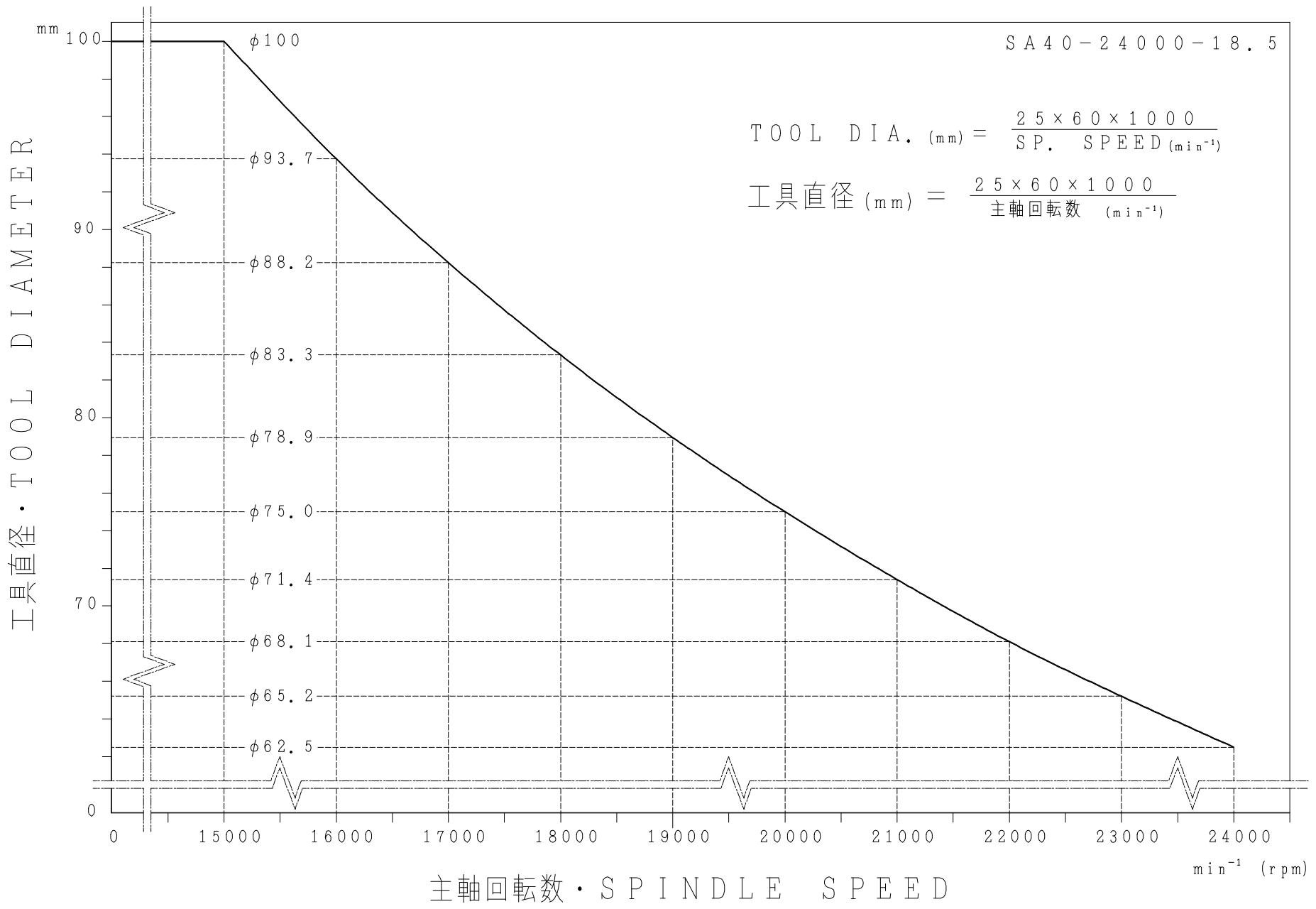
工具マガジン

注：工具重量や工具径、工具長さ等のディメンジョンには使用上の制限がありますので、これらの制限を超える工具は絶対に使用しないで下さい。

SA 40-24000-18.5

$$\text{TOOL DIA. (mm)} = \frac{25 \times 60 \times 1000}{\text{SP. SPEED (min}^{-1}\text{)}}$$

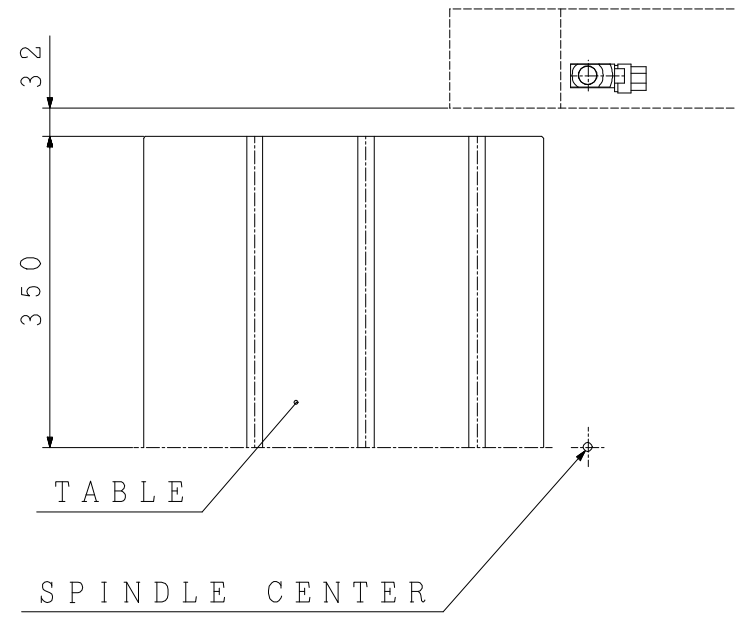
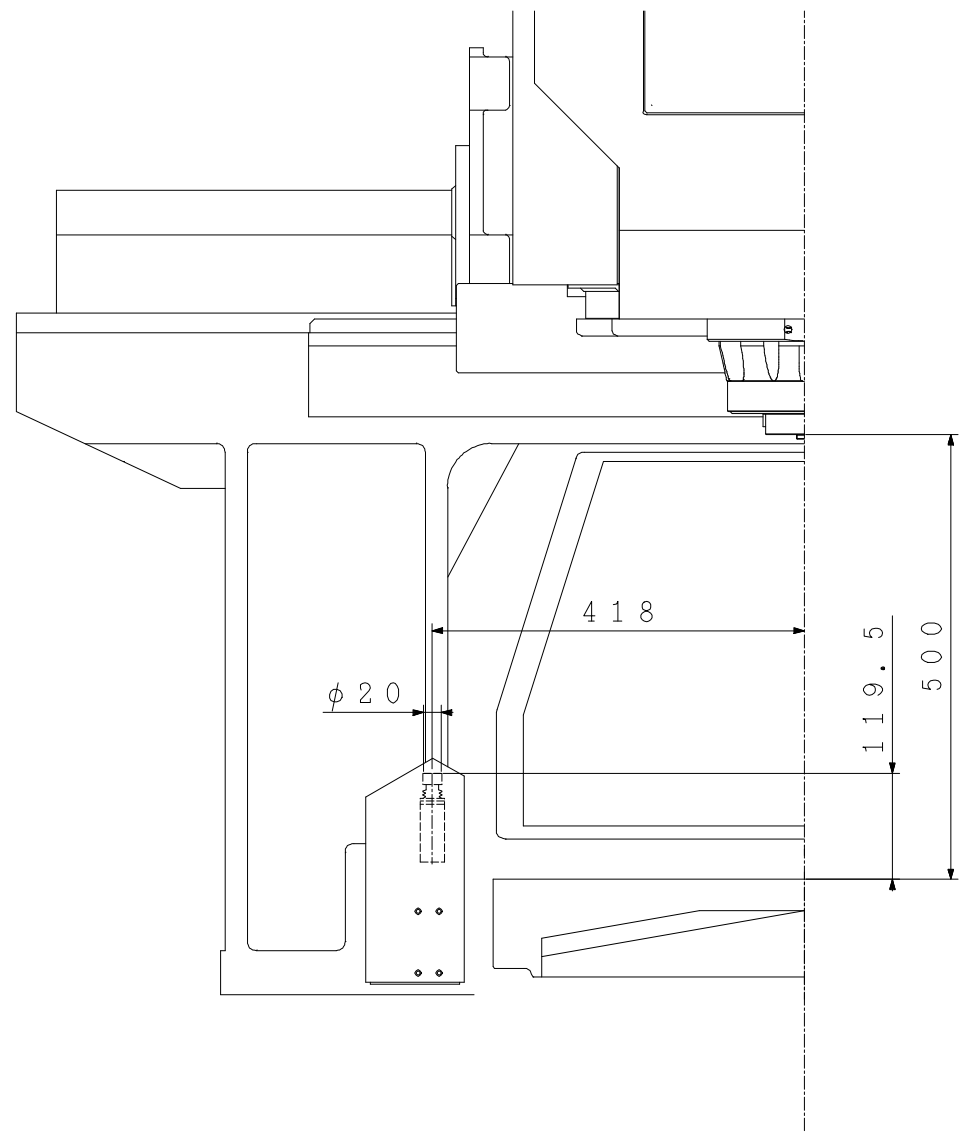
$$\text{工具直径 (mm)} = \frac{25 \times 60 \times 1000}{\text{主轴回転数 (min}^{-1}\text{)}}$$



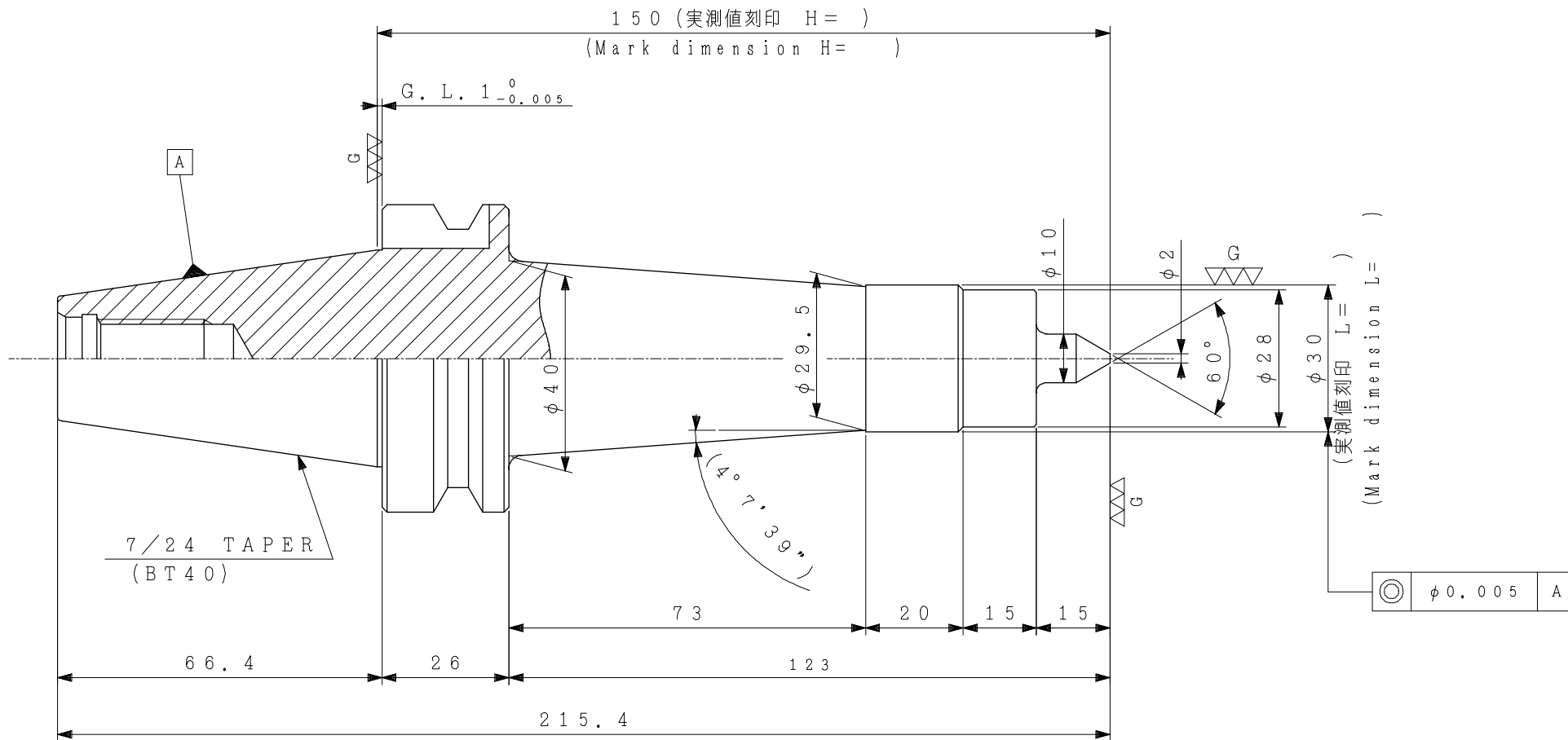
工具直径・TOOL DIAMETER

主轴回転数・SPINDLE SPEED

TOOL LENGTH COMPENSATION UNIT DIMENSION (YBM-640V)



GAUGE TOOL DIMENSION



《BT40 (MAS-403) BIGPLUS用》

85S60-044-00A15